

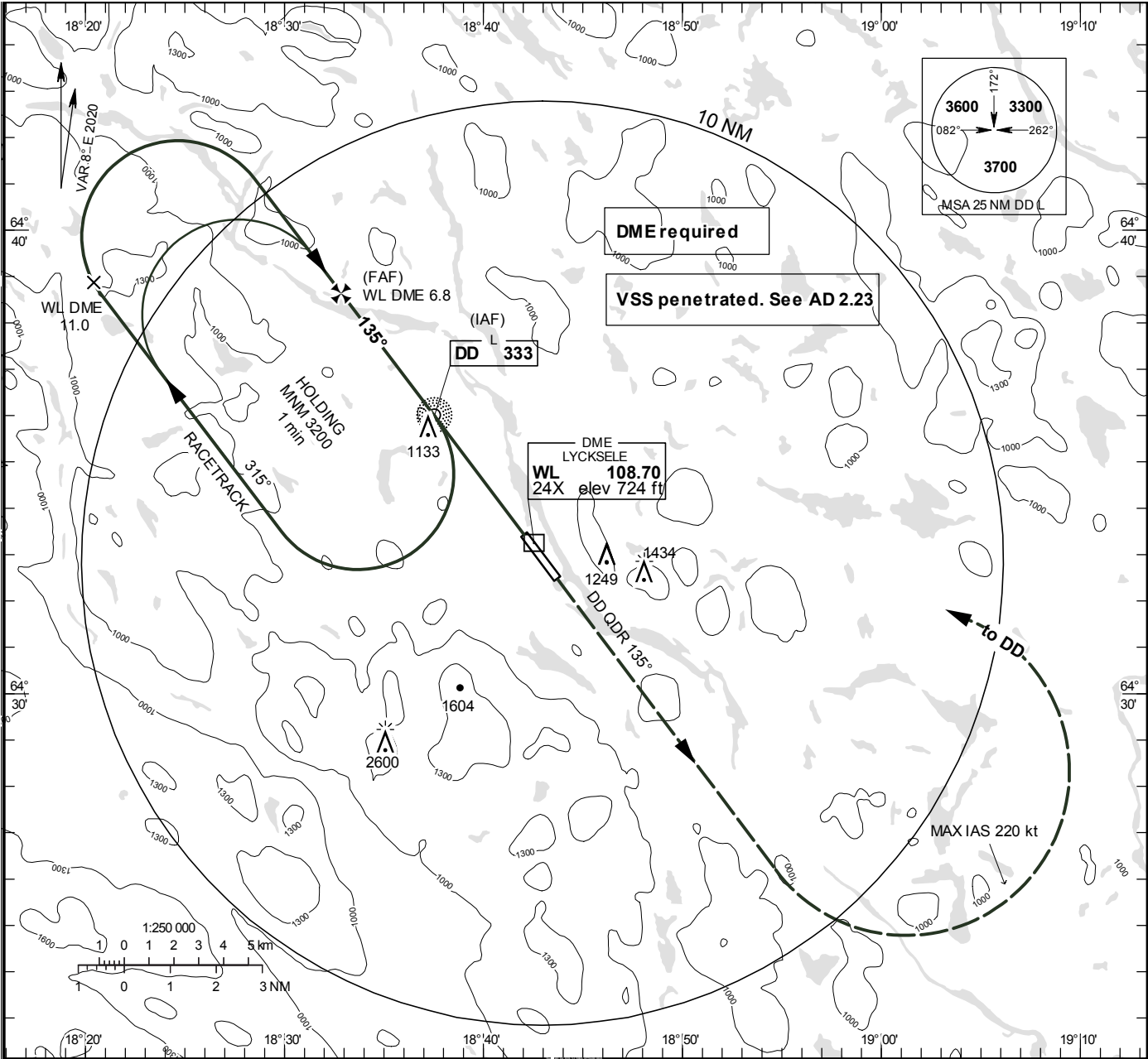
**LYCKSELE**  
**NDB RWY 14**

AIP SVERIGE/SWEDEN

**INSTRUMENT  
APPROACH  
CHART – ICAO**

**THR ELEV 704.5 ft, AD ELEV 705 ft**  
OCH are related to THR.  
Circling OCH are related to AD ELEV.  
BRG are MAG  
ALT. HGT and ELEV in ft.

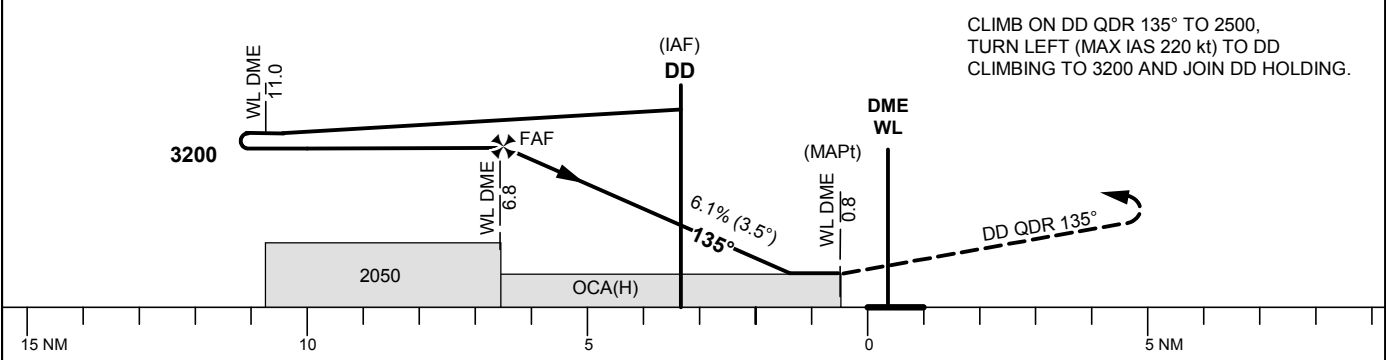
LYCKSELE  
INFORMATION 122.230



TA 5000 ft AMSL

\*Timing not authorized for defining the MAPt

No turn before MAPt



OCA (H)				Final approach	Distance FAF-MAPt 6.0 NM*					
Cat of ACFT	A	B	C	DME WL NM	6	5	4	3	2	1
Straight-in Approach	1380 (680)			ALT	2920	2550	2180	1810	1440	1070
Circling	1550 (850)	1730 (1030)	2000 (1300)	GS	kt	80	100	120	140	160
				Time	min:s	4:35	3:40	3:03	2:37	2:17
				Rate of descent	ft/min	495	620	745	865	990

CHANGE: Editorial